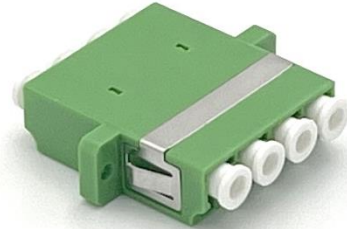


## ADQLA-S

### QUAD SINGLEMODE LC/APC ADAPTOR

#### Features

- ◆ Precision alignment for accurate fiber connection
- ◆ Low insertion loss for minimal signal attenuation
- ◆ Compact design for space-saving installation
- ◆ Easy installation and removal for convenient maintenance
- ◆ High durability and compatibility for long-lasting performance in various applications.



#### General

Interface  
Fiber Mode  
Fiber Type  
Mount Type  
Product Type

LC/APC  
Single-mode  
OS2  
Flange  
Quad

#### Dimensions

Connector Size

34.7\*34.8\*9.3 mm

#### Technical

Operating Temperature  
Insertion Loss  
Return Loss  
Repeatability  
Durability

-20 °C to +70 °C  
≤0.3dB  
≥60dB  
≤0.1dB  
1000 times

#### Compliance

Applicable  
Flammability  
Standards

RoHS2.0  
UL94-V0  
IEC61754-20

