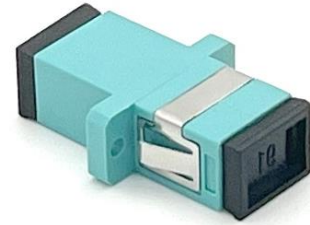


## ADSSU-G

### SIMPLEX OM3 SC/UPC ADAPTOR

#### Features

- ◆ Precision alignment for accurate fiber connection
- ◆ Low insertion loss for minimal signal attenuation
- ◆ Compact design for space-saving installation
- ◆ Easy installation and removal for convenient maintenance
- ◆ High durability and compatibility for long-lasting performance in various applications.



#### General

Interface	SC/UPC
Fiber Mode	Multi-mode
Fiber Type	OM3
Mount Type	Flange
Product Type	Simplex

#### Dimensions

Connector Size	33.3*22*9.3 mm
----------------	----------------

#### Technical

Operating Temperature	-20 °C to +70 °C
Insertion Loss	≤0.2dB
Return Loss	≥35dB
Repeatability	≤0.1dB
Durability	1000 times

#### Compliance

Applicable	RoHS2.0
Flammability	UL94-V0
Standards	IEC61754-20

