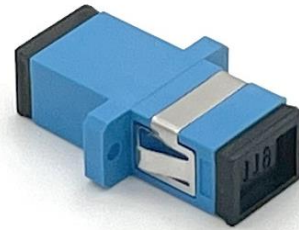


ADSSU-S

SIMPLEX SINGLEMODE SC/UPC ADAPTOR

Features

- ◆ Precision alignment for accurate fiber connection
- ◆ Low insertion loss for minimal signal attenuation
- ◆ Compact design for space-saving installation
- ◆ Easy installation and removal for convenient maintenance
- ◆ High durability and compatibility for long-lasting performance in various applications.



General

Interface	SC/UPC
Fiber Mode	Single-mode
Fiber Type	OS2
Mount Type	Flange
Product Type	Simplex

Dimensions

Connector Size	33.3*22*9.3 mm
----------------	----------------

Technical

Operating Temperature	-20 °C to +70 °C
Insertion Loss	≤0.3dB
Return Loss	≥50dB
Repeatability	≤0.1dB
Durability	1000 times

Compliance

Applicable	RoHS2.0
Flammability	UL94-V0
Standards	IEC61754-20

