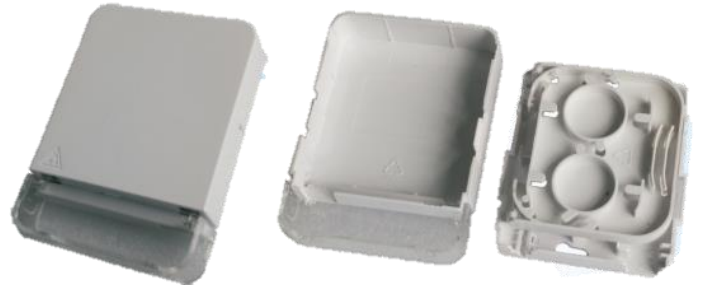


WB04-01WHS A

84*116*23 White FTTH Wall Box 04 Cores With One Adapter

Features

- ◆ Compatible with Φ 0.9-3.0mm pigtail & 3.0*2.0mm indoor drop cable.
- ◆ Compatible with one SC&FC adapter, optical fast connectors.
- ◆ The splice capacity is 4 cores.
- ◆ Snap on cover.
- ◆ Simple,easy to use.
- ◆ Duble layer design,upper layer is for fusion,lower is for distribution. The fibers distribution clearly, easy to operate.



Application

- ◆ Single mode and Multimode fibers
- ◆ FTTX applications
- ◆ Wall mount or fiber distribution

Description

FTTH Wall Outlet, It is used for different kinds of modules and applied to the working area subsystem, It uses embedded surface frame, easy to install and disassemble, it is with protective door and dusty free, No additional insertion loss, protection of optic fiber and cable reduce the potential risk, simple and convenient for construction.

Specification

1	Closure Type:	Patch panel
2	Fiber Capacity:	4 Cores
3	Material:	ABS
4	Adapter Quantity Max:	1 SC/APC
5	Fiber Mode:	Single & Multi mode
6	Color:	White
7	Mounting:	Wall
8	Dimension:	86*116*23 mm
9	Operation Temperature:	-20~+65 °C

